



# CCAM

---

Caribbean Coastal Area  
Management Foundation

## ENFORCEMENT TEAM

# WHO IS A CONSERVATION OFFICER?

- ▣ A Conservation Officer is a law enforcement officer who protects wildlife and the environment. A Conservation Officer may also be referred to as an environmental technician or technologist, game warden, forest ranger, game keeper, investigator, wilderness officer or wildlife trooper.

# WHAT DOES A CONSERVATION OFFICER DO?

- ▣ In addition to enforcement, the conservation officer educates the public about wildlife and wildlife management, conducts wildlife surveys, captures problem animals, investigates wildlife damage to crops and property, assists in wildlife relocations and helps to develop new regulations.

# FISH SANCTUARIES

- ▣ Special Fishery Conservation Areas are no-fishing zones reserved for the reproduction of fish population. C-CAMF is responsible for three fish sanctuaries in the Portland Bight Protected Area.
- ▣ Salt Harbour Fish Sanctuary (SHFS)
- ▣ Galleon Harbour Fish Sanctuary (GHFS)
- ▣ Three Bays Fish Sanctuary (TBFS)

# BEACH MONITORING

This is the study and observation of changes in the morphological characteristics of a beach profile. C-CAMF's main focus is monitoring the effect of waves on the shoreline.

We do this via the use of a specific set of tools:





# SANCTUARY PATROLS

- Everyday the conservation officers patrol the sanctuaries for 8 hours to ensure there are no illegal fishing within the conservation areas. This ensures that fishermen adhere to law so that the fish population can continue to replenish.
- There are occasions when the team encounters those who decide to break the laws of the sanctuaries and action must be taken.







# WILDLIFE SURVEYS

The care and protection of our wildlife including animals and plants is of utmost importance to C-CAMF. As such we conduct surveys periodically throughout the year to assess the state of our wildlife species. These surveys include but aren't limited to: crocodile surveys, which is conducted in partnership with NEPA, mangrove surveys, turtle monitoring and, bird banding,



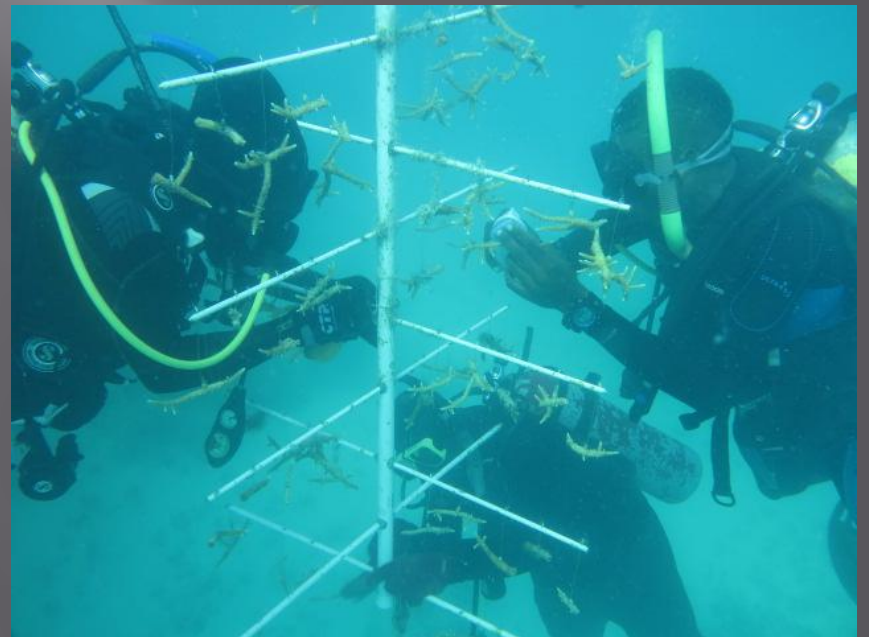
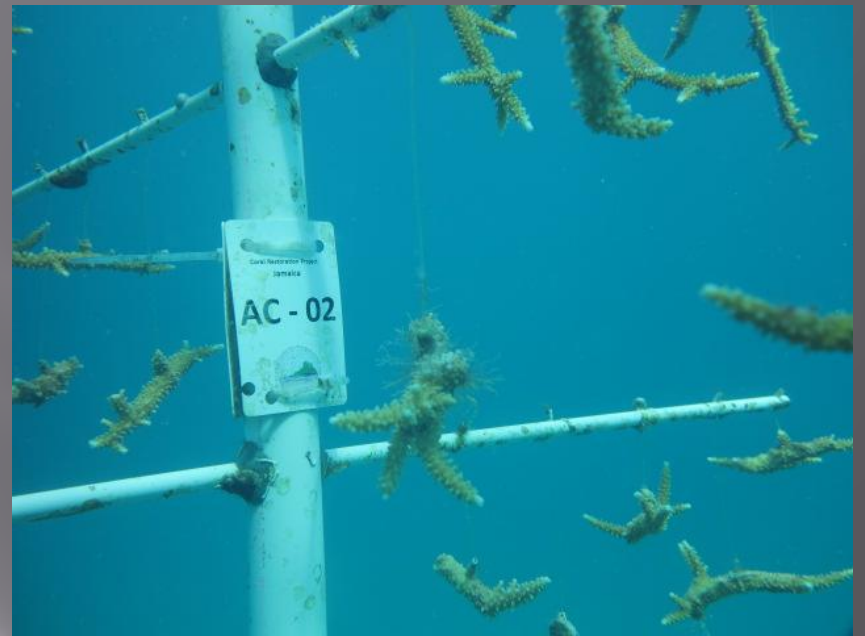
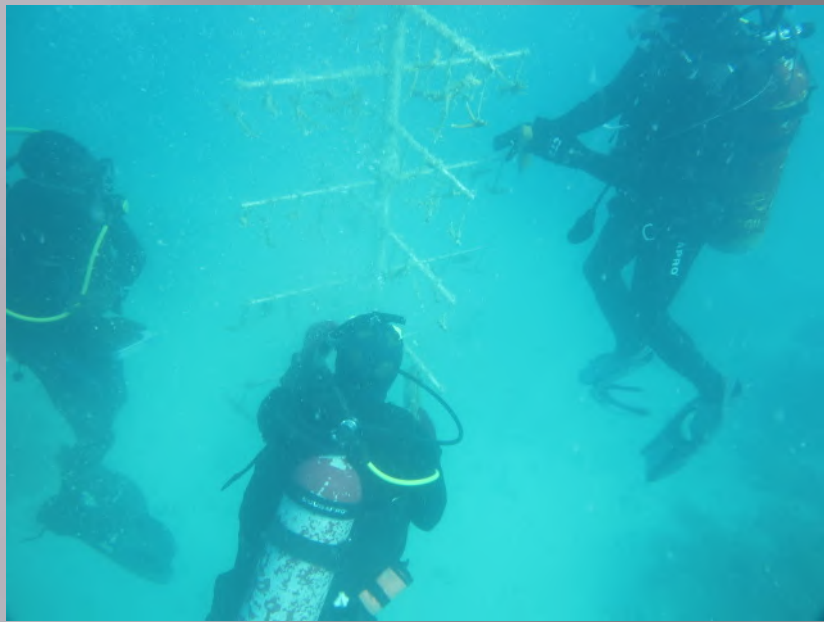






# Coral Restoration Program

In the last decade there has been a noticeable decline in our corals due to coral bleaching, natural disasters and human action. C-CAMF like other environmental agencies has initiated a coral restoration program to help replenish the corals population.



# Artificial Reefs in Fish Sanctuary

Due to the destruction of natural fish habitats by natural and human actions C-CAMF has adopted the creation of artificial reefs in fish sanctuaries. This creates a habitat for fish to live and survive in the sanctuaries.







# Educational Tours

Knowledge is power and educating the public about the importance of our natural environment will raise awareness about why it is that they should be protected so that future generations may benefit from them as we have and continue to. C-CAMF is striving to help raise this awareness by doing educational tours in the Portland Bright Protected Area on land and sea.



